

From: "The Wiz"

Home

by

CHARLIE SMALLS

Published Under License From

Alfred Publishing Co., Inc.

© 1974 WARNER-TAMERLANE PUBLISHING CORP.
All Rights Reserved

Authorized for use by *Shawntique Lewis*

NOTICE: Purchasers of this musical file are entitled to use it for their personal enjoyment and musical fulfillment. However, any duplication, adaptation, arranging and/or transmission of this copyrighted music requires the written consent of the copyright owner(s) and of Musicnotes.com. Unauthorized uses are infringements of the copyright laws of the United States and other countries and may subject the user to civil and/or criminal penalties.

HOME

from *The Wiz*

Words and Music by
CHARLIE SMALLS

Moderately

mp

The piano introduction consists of two staves. The right hand features a melodic line with a series of quarter notes, each beamed together and marked with a fermata. The left hand provides a harmonic accompaniment with chords and moving bass lines.

G

000

F/G

x 0 2 3 4

The vocal melody line is written in treble clef with a key signature of one sharp (F#). It features a series of quarter notes and eighth notes, with triplets indicated by a '3' over a bracket.

When I think of home I think of a place where there's love o - ver -
May - be there's a chance for me to go back now that I have some di -

The piano accompaniment for the first vocal line consists of two staves. The right hand plays chords and moving lines, while the left hand provides a steady bass line.

G

000

The vocal melody line continues with quarter notes and eighth notes, including triplets.

flow - ing. I wish I was home, I wish I was back there _ with the
rec - tion. It would sure be nice to be back _ home where there's

The piano accompaniment for the second vocal line consists of two staves, continuing the harmonic support for the vocal melody.

F/G



3

C

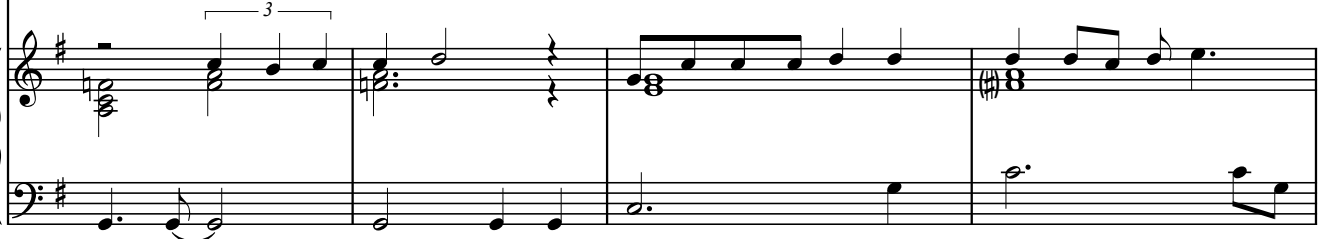


D/C



things I've been know - ing.
love and af - fec - tion.

Wind that makes the tall trees bend in - to lean - ing,
And just may - be I can con - vince time to slow up,



C



D/C

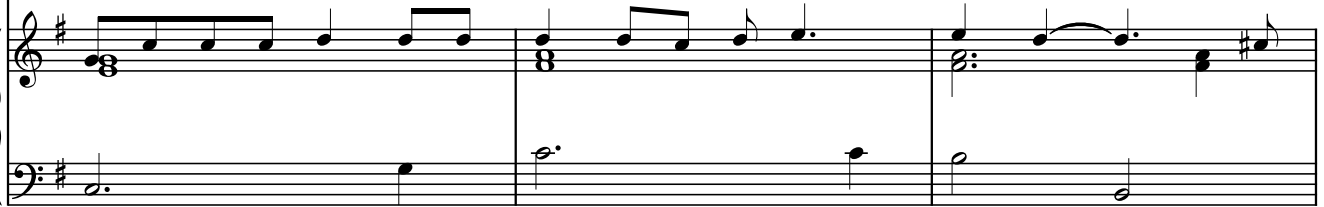


Bm7



sud - den - ly the snow - flakes that fall have a mean - ing,
giv - ing me e - nough time in my life to grow up.

sprink - ling _____ the
Time _____ be my



E7b5



E7



Am7



D#/F

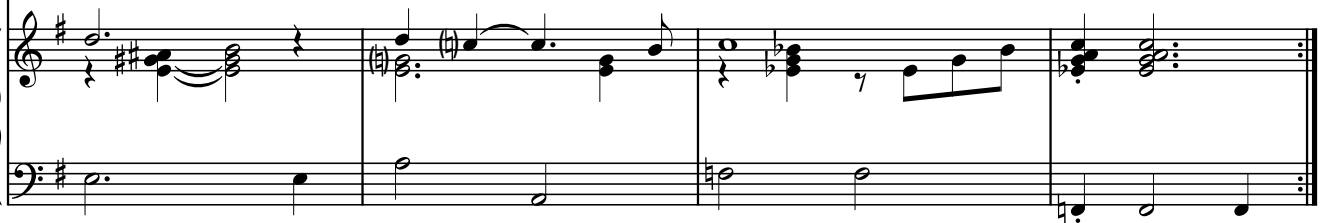


F9



scene
friend,

makes it _____ all clean.
let me start a - gain.





Sud - den - ly my world's gone and changed its face but I still know where I'm



go - ing. I have had my mind spun a - round in space and yet I've



watched it grow - ing. If you're lis - 'ning God, please don't



make it hard to know if we should be - lieve the things that we see. Tell us

Am7



D9



C



F/G



should we run a - way, should we try and stay or would it be bet - ter just to let things be? _

G7



C



D/C



— Liv - ing here in this brand new world — might be a

Bm7



E7b9



Am7



fan - ta - sy — but it taught me to love. —

D7



F/G



G7



F/A



G7/B



— so it's real — to me. And I've

C D/C Bm7

learned that we must look in - side our hearts to find _____

E7b9 Am7 D/G Em/F#

_____ a world full of love _____ like yours and

D#/F F9 N.C.

mine, _____ like home. _____

N.C. Bb/Ab G

8vb